

# Capital Region Island Emergency Programs



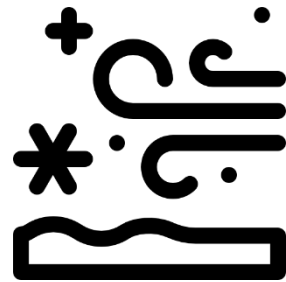
Jonathan Reimer  
Manager, EA Fire & Emergency Programs  
July 2022

# What's an Emergency?

- Accident, fire, explosion, technical failure or force of nature
- Requires prompt coordination to protect people or limit damage



Wildfire



Extreme Weather



Seismic

+ 51 more

# Why Emergency Programs?

## Island First Responders

- Fire Departments
- RCMP
- BC Ambulance
- Coast Guard
- Search and Rescue
- RCM SAR
- Environmental Response Officers
- Critical Infrastructure Operators
- *etc.*



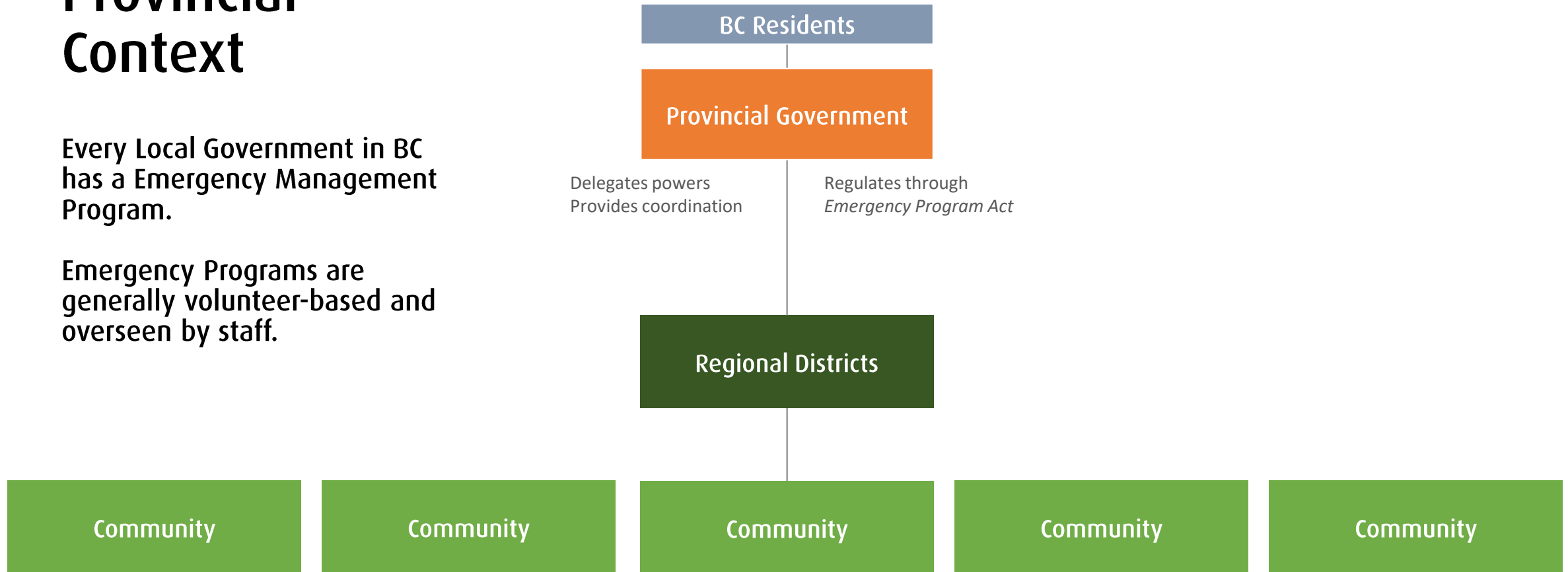
Local Government Emergency Programs bring a community-focused all-hazards perspective.

- Disaster planning
- First Responder coordination
- Community preparedness

# Provincial Context

Every Local Government in BC has a Emergency Management Program.

Emergency Programs are generally volunteer-based and overseen by staff.



# We do things differently

Most Regional District have 5+ Electoral Areas and centralized Emergency Programs

Our island communities have independent identities, close-knit neighbourhoods, and are vulnerable to transportation interruption

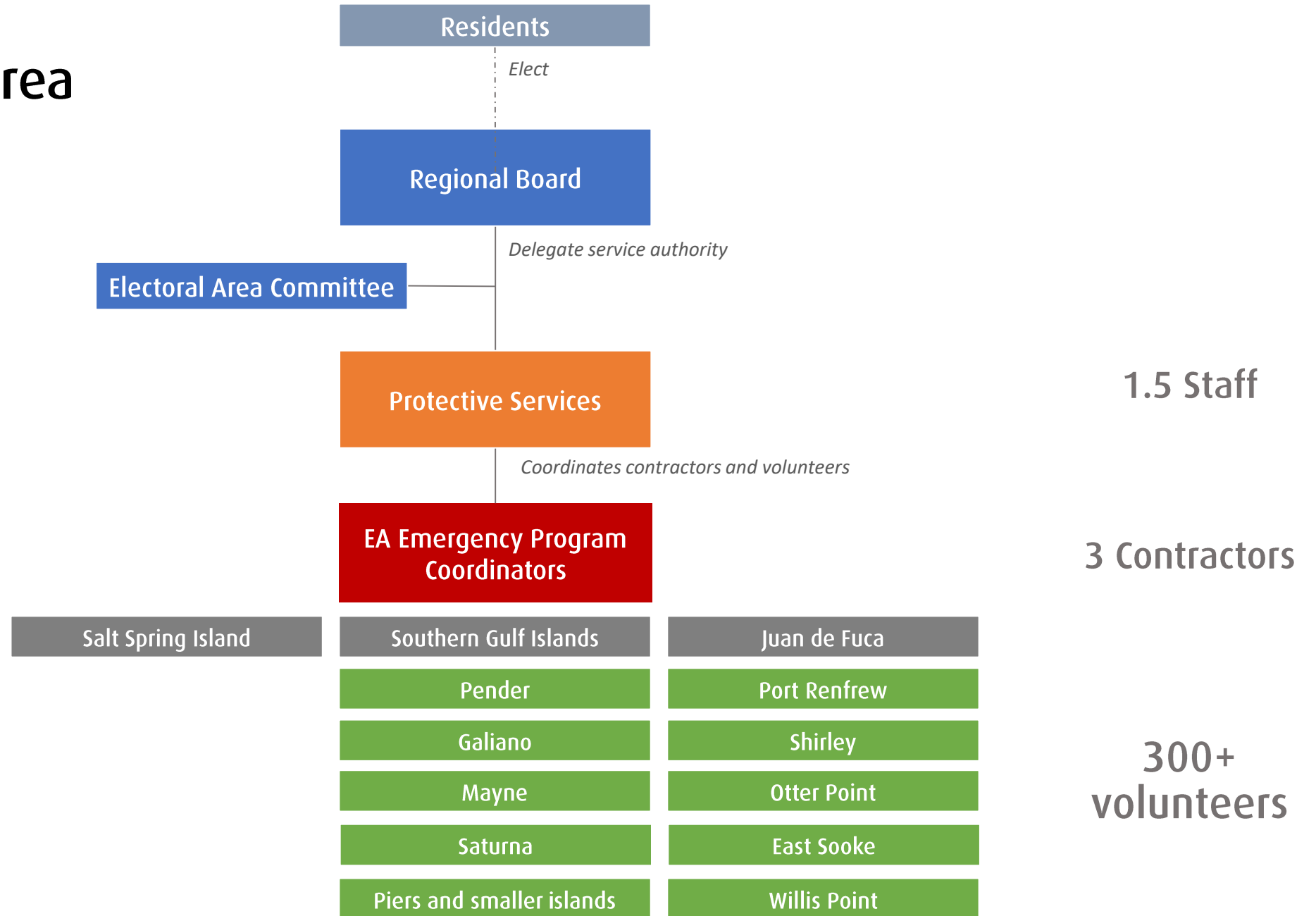
Each island has:

- Emergency Coordination Centre
- Island Emergency Coordinator (volunteer w/ stipend)
- Amateur radio program
- Reception centres
- Emergency Support Services volunteer team
- Emergency supply cache



# CRD Electoral Area Emergency Programs

## Peacetime



# What do we do?

## Enable Public Readiness

- Public education campaigns (such as [prepareyourself.ca](http://prepareyourself.ca))
- Neighbourhood Preparedness Programs (~250 pods)
- Provide preparedness resources (sandbags, GRMS radios, etc.)
- Public alerting (PANS, alert ready, phone trees, etc.)

## First Responder Coordination

- Seasonal readiness meetings
- Disaster planning
- Incident support
- Emergency communications (eg. amateur radio program)

## Local Government Response

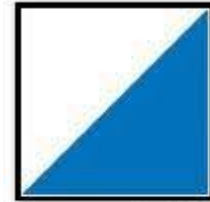
- Emergency Support Services
- Warming and Cooling Centres

# During Emergencies

## Incident Command Post (Site)

- Responsible for operational activities
- Led by Incident Commander from lead response agency

Incident Command Post



On a map, the ICP location appears as a blue and white square.

## Emergency Operations Centre (Site Support)

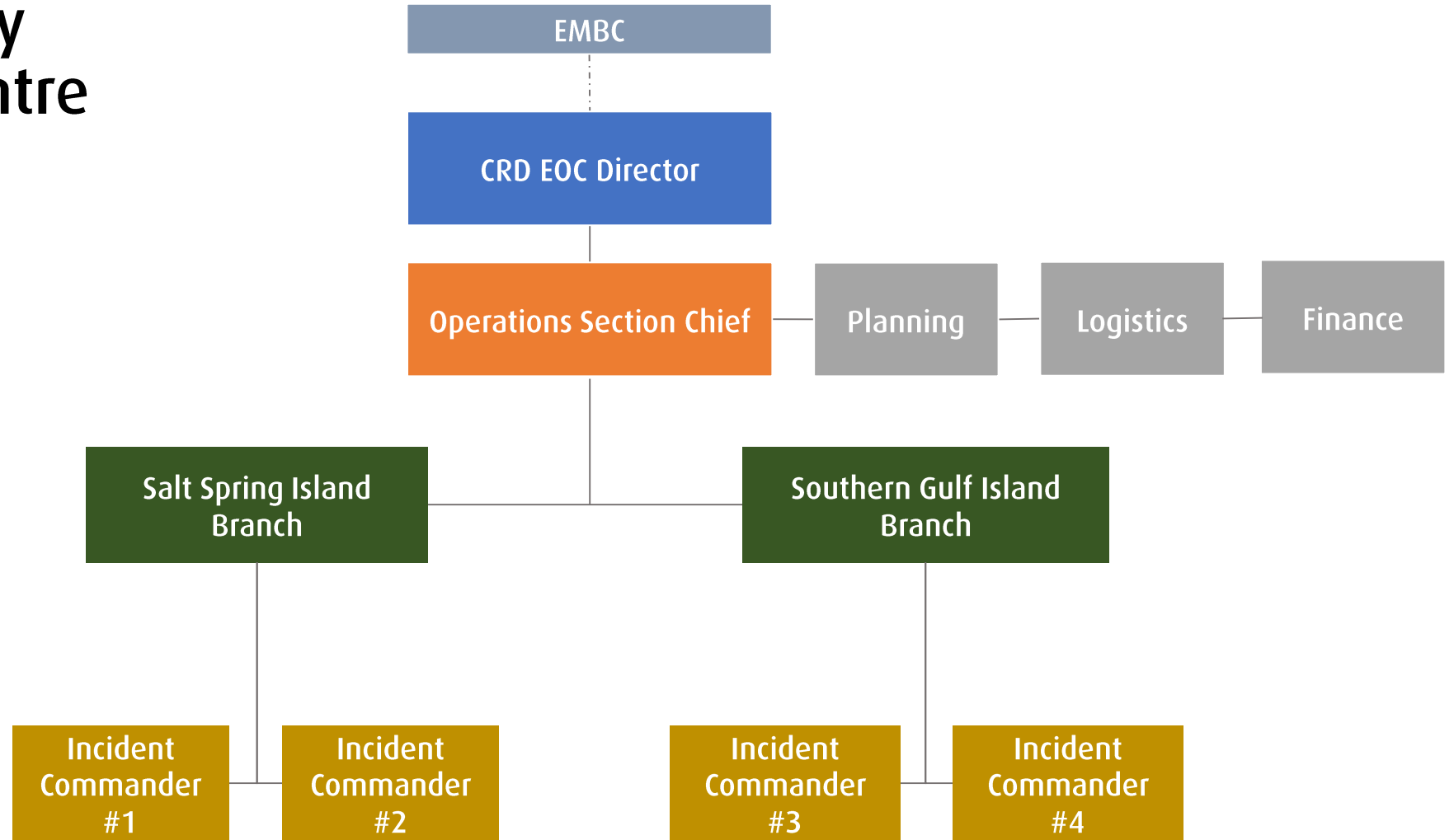
- Host coordination calls
- Fill resource requests
- Provide Emergency Support Services to evacuees
- Provide Emergency Powers
- Assist with public alerting and communication
- Gather situational awareness





# CRD Emergency Operations Centre

## Response



# What's new?



Upgraded Salt Spring Island Coordination Centre



Southern Gulf Islands Community Preparedness Grant



Lively Peak Amateur Radio Repeater



Regional District FireSmart Program

# What are we doing now?



Community evacuation guides



Updating Community Wildfire Resiliency Plans



Tsunami hazard map



Real-time situational awareness software

# What can we do together?

- Incorporate hazard and vulnerability into community planning
- Cooperate on mitigation and recovery planning
- Reinforce emergency preparedness messaging
- Share situational awareness